



2023

Visiting Pilot's Guide to Flying into Rufforth Airfield East



Revision 2 (simplified version)

03/10/2023

## Visiting Pilot's Guide to Flying into Rufforth Airfield East

Rufforth Airfield East welcomes pilots from all forms and disciplines of aviation.

With a hard runway orientated 23/05 and 500 metres in length (68ft AMSL), we can accommodate most single engine GA types as well as Microlights and Gyrocopters.

With a hard runway and taxiways Rufforth East is available all year round regardless of weather.

We are open for flying dawn 'till dusk 365 days a year. Please do not circuits before 08:00hrs or after 20:00hrs.

Note: This runway is on farmland and is a former RAF Airforce base from WWII.

All Circuits are all to the **South at 500ft QFE**, with **STRICT** noise abatement (see diagram below).

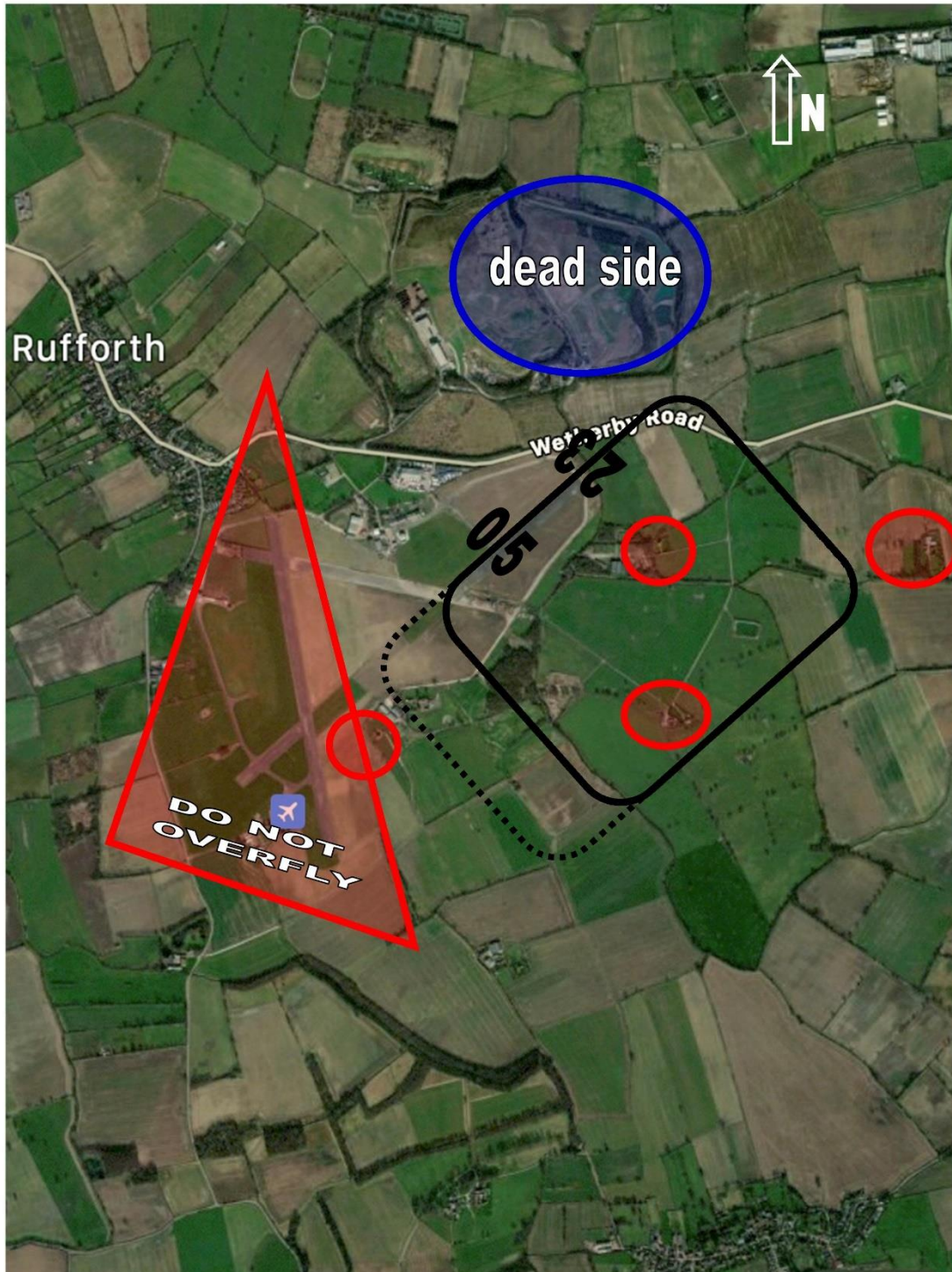
### Critical Information

**Noise !!! Our neighbours are very noise sensitive, so all pilots are requested to be considerate. There is habitation very close to each end of all the runway and also some houses and farms in the middle of the circuit.**

**Even to the north in the relatively free airspace there are additional farms and houses. If it was at your home airfield you would expect the same.**

**The locations of the houses and farms in the circuit are highlighted below in red, please do not overfly these.**

## Rufforth Airfield East



## Rufforth Radio 120.380

## Radio

Rufforth Airfield East is a Radio Mandatory airfield, callsign **Rufforth Radio on 120.380MHz**.

Rufforth Airfield East operates an Air Ground Communication Service operating during fly-ins and events. If the AGCS Radio is not manned please make appropriate blind calls to Rufforth Traffic, on joining the circuit, downwind, final and when departing the circuit.

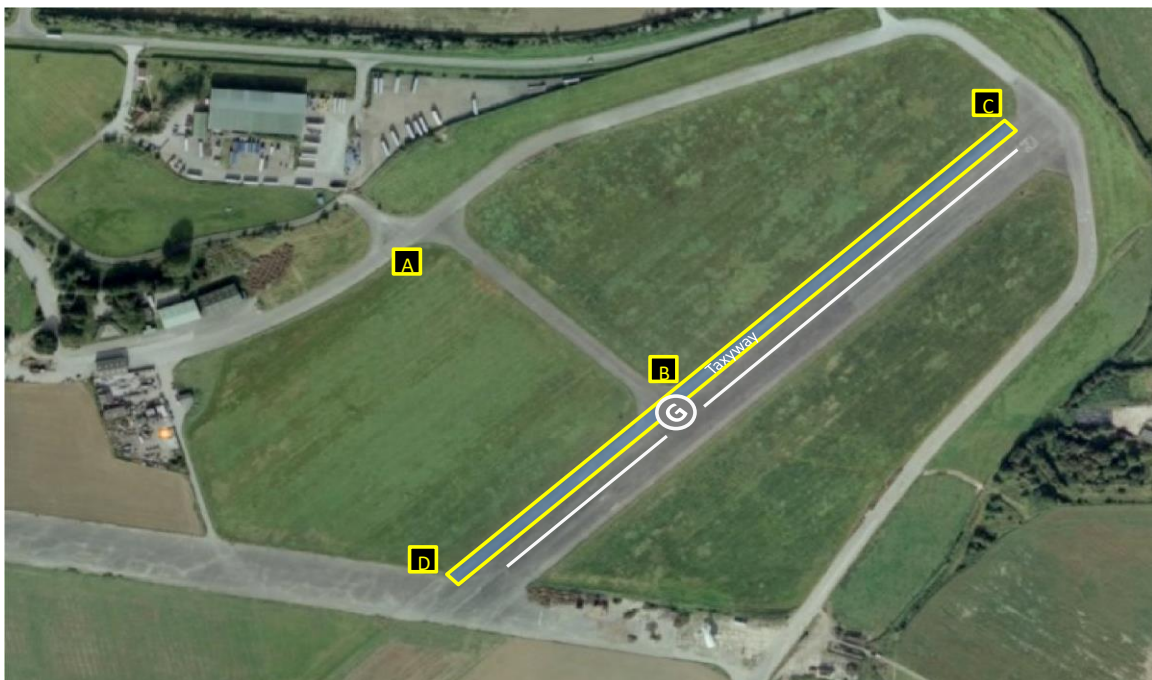
**Please Note** that the airfield is surrounded by farm land so farm vehicles are active 24x7, also **Zeus UAV** test fly military grade UAV's fly at Rufforth East, and extensive glider flying takes place next door at **Rufforth West**. **Do not overfly the glider site, they operate static winch launch operations up to 2,100ft and Tug launch up to 3,000ft AGL.**

## Common Sense

Overhead joins are preferred to the east over the 23 numbers at 1,000 ft if when joining from the south. It is common practice to use a **dead side join over the old landfill tip** at Rufforth East when approaching from the North.

N.B. On fly-in days we get VERY BUSY so please keep a good look out, follow any special instructions for the event and make good separation for landing, if in doubt go around or depart and re-join the circuit.

After landing on 05 or 23 vacate runway at holding point Bravo, towards the hangars and past Alpha. Please park considerately and please do not block access to the hangars.



## The Apron

